

Slope Fields
 Nancy Stephenson
 Clements High School
 Sugar Land, Texas

KEY

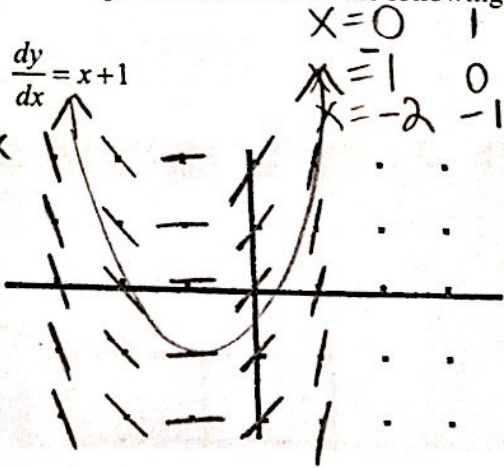
$$\int \frac{1}{2} \cdot \frac{1}{y} dy = \int dx \quad e^{2x+C} = y$$

$$2 \frac{1}{2} \ln|y| = x \cdot 2 \quad y = \pm e^{2x+C}$$

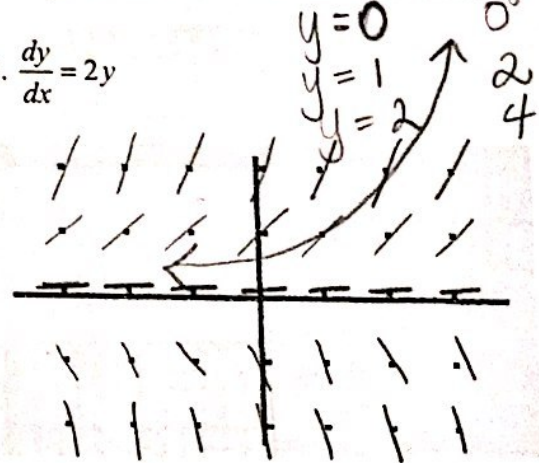
Draw a slope field for each of the following differential equations. Each tick mark is one unit.

1. $\frac{dy}{dx} = x+1$

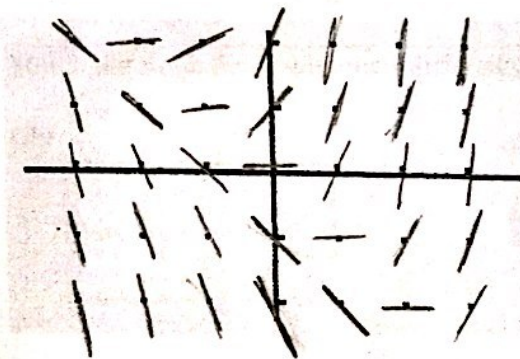
$\int dy = \int x+1 dx$
 $y = \frac{x^2}{2} + x + C$



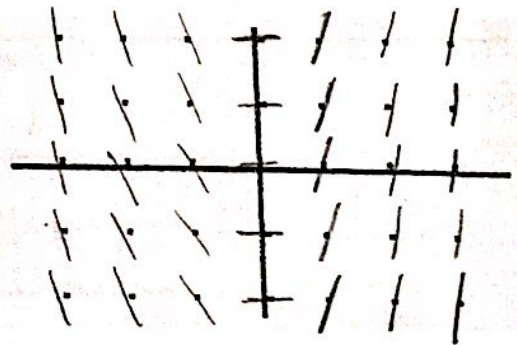
2. $\frac{dy}{dx} = 2y$



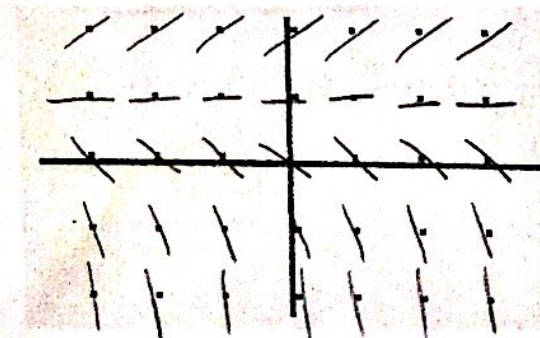
3. $\frac{dy}{dx} = x+y$



4. $\frac{dy}{dx} = 2x$



5. $\frac{dy}{dx} = y-1$



6. $\frac{dy}{dx} = -\frac{y}{x}$

