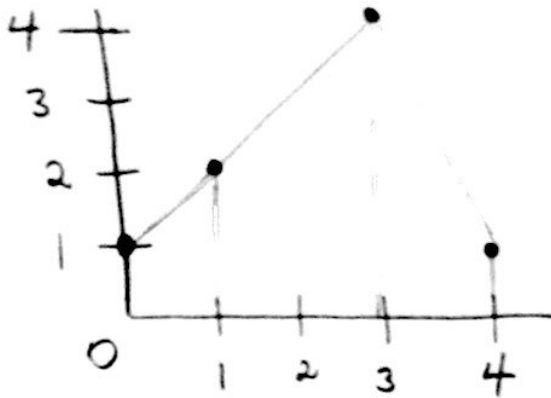


4)

x	0	1	3	4
y	1	2	4	1

* unequal intervals!

Use TAM



$$\begin{aligned} A &= \frac{1}{2}h(b_1 + b_2) \\ A &= \frac{1}{2} [1(1+2) + 2(2+4) \\ &\quad + 1(4+1)] \\ &= \frac{1}{2}(3 + 12 + 5) \\ &= \frac{1}{2}(20) \\ &= \boxed{10} \end{aligned}$$